

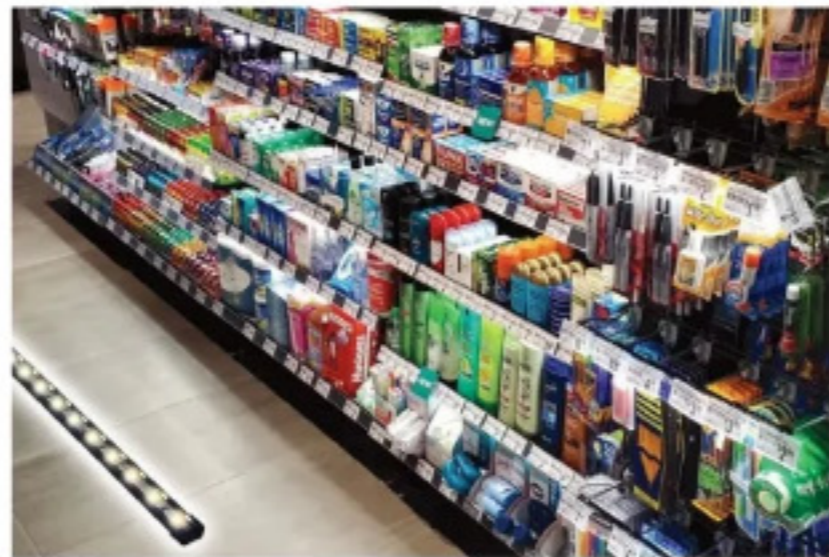
Creative Spotlight-Illuminated Display Systems



Testrite's Charisma SEG Lightboxes show off a brand and help delineate a brand's space in all types of retail environments. These lightboxes were built by Testrite Visual in the USA for Side Mount, spanning the entrance to the brand's appliance space. Testrite's Charisma SEG/LED Slim Profile Light Boxes™ are designed with a clean aesthetic in mind. They are a 3-1/8" deep fabric lightbox with powerful edge lighting making them one of the thinnest lightboxes in the industry. For more information, contact Testrite Visual Products, 216 South Newman Street, Hackensack, NJ 07601; www.testrite.com.



Focus Display Group has introduced an LED Backlit Frame, available in standard 19" x 25", 27" x 40" sizes, and also available in custom dimensions. Frame colors include Black, White, or Fashion Color Frames for product branding. The Snap Lock frame system enables easy interchanging of graphics. For more information, contact Focus Display Group, 11956 Bernardo Plaza Drive, San Diego, CA 92128; www.focusdisplay.com.



Lighting For Impact's affordable shelf lighting solution transforms everyday displays into remarkable merchandising centerpieces to captivate shoppers and grow basket size. Lighting For Impact offers patented methods for simple-install on metal, wire, wood, pegged, and glass displays. Its C-channel LED retail shelf display lighting is its most affordable and popular solution as it can be used for both undershelf lighting and pegged merchandising displays. For more information, contact Lighting For Impact, 3201 S. 6th St., Lincoln, NE 68502; www.lightingforimpact.com.



Alpina offers custom shaped Edgelit LED Coin Signs. Alpina manufactures these signs with high-end routers and laser cutters that custom cut any shape. Then they illuminate the sign with special bright low voltage LED lights that encircle the outside of the sign creating a unique halo edge glow. The sign will also include the printed top layer with any intricate graphic layout. A typical sign will use under 50 watts of power and is under 1/2 inch in thickness. It is more lightweight than traditional LED lightbox snap frames. For more information, contact Alpina Manufacturing, 6460 W. Cortland St., Chicago, IL 60707; www.fastchangeframes.com.



Trion's WonderBar® Lighting System, which organizes products to permit more placements Within the Same Space™ has added lighting to make products stand out even more. The WonderBar Merchandising System retrofits onto current gondolas, eliminating the need for expensive new equipment, and the additional lighting system easily attaches to the WonderBar, without taking up any retail space. WonderBar's quality steel construction, ensures durability for many years. For more information, contact Trion Industries, Inc., 297 Laird St., Wilkes-Barre, PA 18702; www.triononline.com.



This custom premium display for Larceny Bourbon is designed to enhance brand presence in retail environments. Constructed with elegant metal and wood shelves, the display features innovative motion sensor black lights that activate upon consumer movement. A bottle glorifier skillfully transforms the Larceny Bourbon's key logo into a captivating focal point. As customers approach, the motion sensor illuminates the black light, revealing a hidden message on the bottle label. This display was created by The MRL Group, 511 SE 5th Avenue, Fort Lauderdale, FL 33301; www.themrlgroup.com.



Heritage Sign & Display's POP offers single- or double-sided LED signs with, transparent lenticular, laser-etching, distortion-printed, or vacuum-formed graphics. The option of changeable graphic panels ensures long-lasting, effective POP display signage. Its lineup of LED signs includes several trademarked items such as our Shape-LiteLED™, Glow-LiteLED™, Shape-WriteLED™, Write-BriteLED™, and Neo-BriteLED™ signs. Glow-Lite™ LED signs offer low-cost, long-running bright LED illumination. The LED light shines out around the perimeter of the sign flooding the wall with a "halo" glow. For more information, contact Heritage Sign & Display, 344 Industrial Road, Nesquehoning, PA 18240; www.popsigns.com.



Americhip offers digital signage solutions ranging from high resolution .9mm LED to blow through LED curtain technology to new, state-of-the-art LED innovations. Americhip can integrate the transparent LED curtain to create an attention-getting transparent LED experience, ideal for retail store front windows and other display applications. For more information, contact Americhip, 19032 S Vermont Ave. Los Angeles, CA 90248; www.americhipdigital.com.